

# HPL



A Panolam Surface Systems Brand.

For over 70 years, Pionite has developed materials that meet the aesthetic criteria of the most demanding architects and designers. Pionite HPL comes in 200+ colors and patterns with a variety of finishes and in-house custom printing capabilities. It is an ideal surface for almost any horizontal or vertical application. The Pionite family of products has been developed to withstand the friction, impact, and ever-changing conditions of life. With Pionite high pressure laminates, the possibilities are virtually endless.

**AT970 LR**  
Mud Pie



**AT371 SD**  
Cressida



**AT710 SD**  
Gold Pannin



**AT106 SD**  
Grandiose Grid



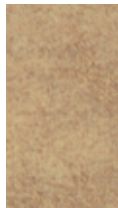
**AT301 SD**  
Beige Linen



**PFA51 SD**  
Gridlock in L.A.



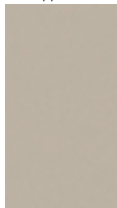
**AT231 SD**  
Manila Linen



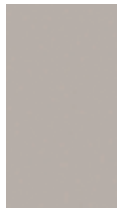
**AT981 SD**  
Coriander Fiber



**HP451 SD**  
Pepperdust



**SG224 SD**  
Stonedust



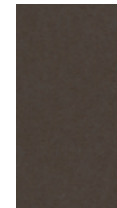
**ST606 SD**  
Taupe



**SG210 SD**  
Greige



**AT965 SD**  
Mellow Marron



**SG228 SD**  
Slate



**ST604 SD**  
Nubian Brown



**AE011 CR**  
Charcoal  
Chromatix



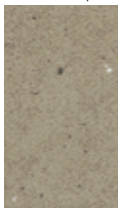
**AV674 SD**  
Olive Organix



**AV250 SD**  
Passin Through



**AV981 SD**  
IL Palio Papel



**AT680 SD**  
Travelin Light



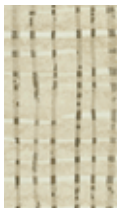
**AT109 SD**  
Soothing  
Pebble Beach



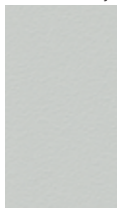
**AT991 SD**  
Wheat Fiber



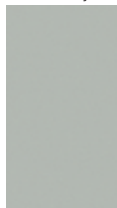
**AT660 SD**  
Crisscross



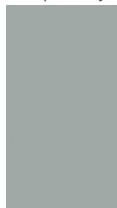
**SG241 SD**  
Folkstone Gray



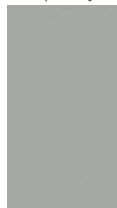
**SG204 SD**  
Mercury



**SG246 SD**  
Dolphin Gray



**SG213 SD**  
Opti Gray



**SG214 SD**  
Bankers Gray



**HP565 SD**  
Storm Gray



**SE101 SD**  
Black



<b>AG021 SD</b> Sable	<b>AG180 SD</b> Meteoric Metallo	<b>AG371 SD</b> Cardamom Fiber	<b>AG471 SD</b> Cinder Gray Concrete	<b>AV999 SD</b> Game Keepers Tweed	<b>AG740 TW</b> Knickerbocker	<b>WH110 SD</b> House of Chevron	<b>AT435 TW</b> Tailor-Made	<b>AP280 SD</b> Belle's Bow	<b>AP365 SD</b> Shetland Tweed	<b>AP290 SD</b> It's a Wrap	<b>W826 SD</b> Angel White	<b>SW888 HX</b> Nimbus White	<b>SW813 SD</b> Ice White	<b>SG211 SD</b> Ingot Gray	
<b>AE021 SD</b> Graphite Spektrum	<b>AG031 SD</b> First N Main	<b>AG801 SD</b> Jumping in Puddles	<b>AG500 LR</b> Cake Batter	<b>AV830 SD</b> Viridescent Silk	<b>AT861 SD</b> Argyle Socks	<b>KNOT QUITE</b>  <b>menswear™</b> COLLECTION				<b>AT505 SD</b> Argyle Sweater	<b>AT840 SD</b> Comeback Camel	<b>SW811 SD</b> White	<b>SW836 SD</b> Winter White	<b>SG254 SD</b> Ash Gray	<b>SG203 SD</b> Pumice
<b>AE100 PV</b> Little Black Dress	<b>AE060 SD</b> Stargazing	<b>AG611 SD</b> Graveyard of the Atlantic	<b>AG750 SD</b> Daydreaming	<b>AG730 SD</b> Yorkshire Tweed	<b>WE280 NW</b> Windsor Elm	<b>AR250 SD</b> Gentleman's Tweed	<b>WE250 NW</b> Ascot Elm	<b>AY135 SD</b> Luminescent Silk	<b>AW700 SD</b> Beau-Tie	<b>AY160 SD</b> In the Trenches	<b>SW806 AW</b> Carnation White	<b>SW803 SD</b> Eggshell White	<b>AW200 SD</b> Bridal Blanco	<b>SG208 SD</b> Limestone	
<b>AB221 SD</b> Cradle of Liberty	<b>AB400 SD</b> Happy Hour	<b>AG130 SM</b> Cookies & Cream	<b>AV971 SD</b> Moonlighting Papel	<b>AG640 SD</b> Soothing White Caps	<b>AW300 SD</b> Love Letters	<b>AT440 SD</b> Connected Cubes	<b>AT988 SD</b> Beachcomber	<b>ST655 SD</b> Almond	<b>SY914 SD</b> Primary Yellow	<b>SY913 SD</b> Forsythia	<b>S0312 SD</b> Bittersweet	<b>SR505 SD</b> Navajo Red	<b>SR520 SD</b> Primary Red	<b>SP401 SD</b> Royal Burgundy	
<b>AB300 SD</b> Head Over Heels	<b>MG125 SD</b> Hugo Gray	<b>AG601 SD</b> Pearl of the Orient	<b>PFA60 SD</b> Negotiating in Geneva	<b>AG081 SM</b> Sugar Pie	<b>AG415 SD</b> Old Friend	<b>AW871 SD</b> Vanilla Fiber	<b>AV751 SD</b> Celery Fiber	<b>AV208 SD</b> Soothing Sea Mist	<b>SG240 SD</b> Moss Gray	<b>SV750 SD</b> Fresh Cut Grass	<b>SV709 SD</b> Springtime	<b>SR537 FL</b> First Kiss	<b>SR525 SD</b> Sweet 16	<b>SP414 SD</b> Tutti Frutti	



<b>WF181 SD</b> Ice Fishin'	<b>WF131 SD</b> Vana	<b>PFA42 SD</b> Tea Party in Boston	<b>AG561 SD</b> Cubicle Papel	<b>AT650 SD</b> Cavalcade South	<b>WW185 SD</b> Oatmeal Cookie	<b>WC652 WE</b> Coastal Cottage	<b>WP120 SD</b> Leave Likatre	<b>SV713 SD</b> Surfin' USA	<b>SB027 SD</b> Summer Vacation	<b>SB006 SD</b> Indigo Blue	<b>SB009 SD</b> Royal Blue	<b>SB040 SD</b> Blueberry Hill	<b>SB007 SD</b> Navy Blue	<b>SB005 SD</b> French Blue	
<b>WX440 SD</b> Black Forest Cake	<b>WA120 SD</b> Afternoon Nap	<b>WT790 SD</b> Wedding Cake	<b>WT790 BB</b> Wedding Cake	<b>WO680 LZ</b> Crackle Crunch	<b>WP140 SD</b> Licorice Stick	<b>WP110 SD</b> Looks Likatre	<b>WZ460 WE</b> Toasted Coconut	<b>WA110 SD</b> Catching Fireflies	<b>WT860 SD</b> Tailgating	<div> inspira™ DIGITAL SURFACES Choose from our digital library, or create your own.</div>					<b>DG0001 SD</b> Honeycomb Hex Wood
<b>WX800 SD</b> Lunar Legno	<b>WC105 SD</b> Trytoo Savatree	<b>WY160 TL</b> Absolute Acajou	<b>WT870 SD</b> Sleeping In	<b>WT870 TL</b> Sleeping In	<b>WZ160 WE</b> Earl Grey Sorbet	<b>AG071 SD</b> Macadamia Nut	<b>AY120 SD</b> Gingersnap	<b>WT850 SD</b> Peach Cobbler	<b>WY131 SD</b> Silvio	<b>DG0081 SD</b> Mini Houndstooth Khaki	<b>DG0082 SD</b> Mini Houndstooth Chocolate	<b>DG0083 SD</b> Mini Houndstooth Mist	<b>DG0084 SD</b> Plaid Intersection Ash Gray	<b>DG0085 SD</b> Plaid Intersection Parchment	
<b>WO095 SD</b> Ornate Oak	<b>WC210 PV</b> Chocolate Malt	<b>WP500 LZ</b> S'mores	<b>WW160 SD</b> Pralines & Cream	<b>WT880 SD</b> Cool Autumn Night	<b>WX170 SD</b> Tiramisu	<b>WC115 SD</b> Aimtoo Savatre	<b>WP115 SD</b> Appears Likatre	<b>WX110 SD</b> Smooth Paddlin	<b>HP689 SD</b> Backwoods Sycamore	<b>WC431 PV</b> Millwork Cherry	<b>WX031 SD</b> Pearwood	<b>WC421 SD</b> Oiled Cherry	<b>HP336 SD</b> Sunset	<b>WC411 SD</b> Yorkshire Cherry	
<b>WC230 PV</b> Butter Toffee	<b>WW050 SD</b> Walnut Grove	<b>WW120 WE</b> A Good Book	<b>WW011 SD</b> Kingsley	<b>WA090 SD</b> Dining by Candlelight	<b>WX600 SD</b> Mocha Almond Fudge	<b>WM791 SD</b> Hardrock Maple	<b>WX041 SD</b> Anigre	<b>WM951 SD</b> Honey Maple	<b>WW601 SD</b> Cinnamon Noce	<b>WT741 SD</b> Taj Teak	<b>W0581 SD</b> Wisconsin Oak	<b>WW561 SD</b> Spice Walnut	<b>WC521 SD</b> Shaker Cherry	<b>PFA48 SD</b> Sipping Seattle Java	



**AT161 SD**  
Rocky Mountain  
High



**WA001 SD**  
Clear Ash



**WM115 SD**  
Sugar Maple II



**WM221 SD**  
Amber Curly  
Maple



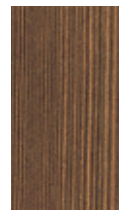
**W0951 SD**  
Fine Oak



**HP360 SD**  
Afternoon  
Showers



**WP125 SD**  
Seems Likatze



**WZ150 SD**  
Peanut Brittle



**WW971 SD**  
Gunstock Savoy  
Walnut



**WY031 SD**  
Formal  
Mahogany



**WC331 PV**  
Victorian Cherry



**MT330 SD**  
City of Lights



**WE261 SD**  
White Elm



**WE360 SD**  
America's  
Pastime



**WA030 SD**  
Picnic in the  
Park



**WW075 SD**  
Zen



**W0862 SD**  
Hearth Oak



**WX230 SD**  
Opto Printatre



**WP130 SD**  
Molten Lava



**HP359 PV**  
Thunderstorm



**WX421 PV**  
Witchcraft



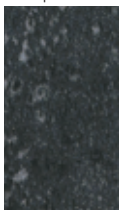
**WY351 PV**  
Jewel Mahogany



**MG160 SL**  
Upland Stone



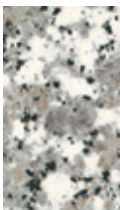
**AG361 SD**  
Graphite Talc



**AG011 SD**  
Estella



**MR130 SD**  
Rose Granite



**MW570 SL**  
Polar Cap



**ME100 SD**  
Faded Memories



**AW141 SD**  
Rock of Ages



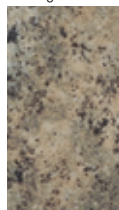
**MW550 SD**  
White Fiesta



**AG381 SD**  
Mineral Talc



**AV781 SD**  
Sage Coral



**MR120 SX**  
Louise



**AT191 SD**  
Viola



**MT310 GR**  
Frederick



**MT390 SX**  
Hazel



**MR125 SX**  
Theodore



**ME011 EV**  
Pyrenees Marble



**ME051 SD**  
Arctic Flash



**MG120 SX**  
Harold



**MG115 SX**  
Moon Dust



**MG180 SD**  
Galactic Dust



**MG170 SL**  
Hedgerow



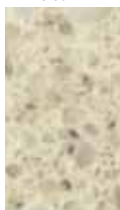
**MW575 SD**  
Chalk Imperiale  
Marble



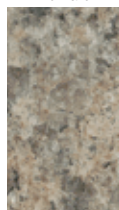
**MG190 SD**  
Rice Lake



**MT500 SD**  
Rock Around the  
Clock II



**MG071 GR**  
Bernard



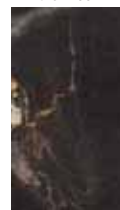
**AT181 SD**  
Agatha



**MT440 SD**  
Cornwall



**MT250 SD**  
Man on  
the Moon



**MG130 SX**  
Abraham



**AG041 SX**  
Shooting Star




#### Please note:

- Printed patterns are shown at a reduced scale from representative segments of large sheets
- Colors may differ slightly from the actual product

- Ideal for horizontal or vertical applications in all commercial and residential environments
- Available in 25 different finishes
- Please contact Pionite or your local distributor for samples before specifying

#### Knot Quite Menswear™ Collection

Introducing our latest collection of HPL products. The Pionite Knot Quite Menswear Collection is a blend of sophisticated woodgrains, classic yet dynamic abstracts, and solids.

 Denotes NEW to wallboard for 2020





## Technical Specifications

Technical information listed below applies to high pressure decorative laminates. For additional technical data, specification sheets, and three-part CSI, visit [pionite.com](http://pionite.com).

### STANDARD LAMINATE

Pionite Standard Laminate is designed for either horizontal, vertical, or postforming applications. Typical uses include countertops, tables, vanities, interior doors, cabinets, contract furniture, and retail store fixtures. Three standard grades of Pionite® laminate are suitable for most applications.

#### G48 General Purpose Grade

Nominal Thickness 0.048"/1.2 mm (NEMA HGS). Most often used in horizontal applications where high-impact resistance and a durable, decorative surface is required.

#### F39 Postforming Grade

Nominal Thickness 0.039"/1.0 mm (NEMA HGP). Designed for manufacturing countertops and other horizontal surfaces where the laminate may be heated and rolled over the substrate edge to eliminate seams.

#### F28 Postforming Grade

Nominal Thickness 0.028"/0.7 mm (NEMA VGP). Designed for surfaces where impact resistance is less critical.

### SPECIALTY PRODUCTS

#### ThruColor™ HPL Laminate

ThruColor HPL is intended for use in applications where the edge of laminate contributes to the aesthetics of the final product. Pionite's elegant manufacturing process provides a second generation color-through laminate that is more flexible and much less likely to chip than other color-through laminates. ThruColor HPL colors and their corresponding colors in standard Pionite are not exact matches. Sample evaluation is recommended. Ideal for high-wear horizontal and vertical applications such as high-end furniture.

#### ChemGuard: Chemical Resistant Laminate

Available in thicknesses up to 1" (25.4 mm). Pionite ChemGuard incorporates the decorative features of high pressure laminate into a durable, chemical resistant surfacing material. The unique manufacturing process of Pionite ChemGuard results in a product with excellent chemical resistant properties. This feature ensures that the ChemGuard surface is more chemical resistant than competitive laminate. Pionite ChemGuard's superior chemical resistant surface cannot be softened with heat for postforming. ChemGuard is ideal for education labs, culinary testing facilities, photographic darkrooms, nurses stations, medical, dental, and veterinary work areas and mortuaries. Thicker ChemGuard laminate can be used as structural components in laboratory bench tops precluding the use of a substrate.

#### ThickLam™ Thick Phenolic Core Laminate

Available in thickness up to 1" (25.4 mm). Designed for applications where the decorative surface must contribute to the structural stability of the finished assembly. ThickLam offers the same chemical resistance properties as standard Pionite laminate. ThickLam thick phenolic can be manufactured with enhanced chemical resistance. Available in the following configurations: decorative both sides and decorative one side. Available with black or brown edge. Typical uses include toilet and dressing room privacy partitions, tabletops, doors, workstations, wall panels, and desktops. ThickLam laminate can be manufactured to provide Class A fire test performance

#### Fire Rated Laminate

Designed for applications where a decorative surface must resist combustion and inhibit smoke production. Fire rated laminate is classified by Underwriter's Laboratory, Inc. under File R6581 in both the US and in Canada. Please refer to Pionite Fire Rated Technical Bulletin for products available as IMO certified. Typical uses include elevator cabs, hospitals, schools, airports, hotels, and other public buildings where strict fire codes apply.

#### Hi-Wear Laminate

Designed for applications requiring increased abrasion and scuff resistance. The product offers more than five times the wear resistance of standard grade laminate. Due to the manufacturing process, Pionite Hi-Wear laminate will vary in color from corresponding colors in standard Pionite. This effect is more pronounced in darker colors and patterns. Sample evaluation prior to order placement is recommended. Typical uses include buffet counters, salad bars, checkout counters, kickboards, bartops, and restaurant counters.

#### ESD (Electrostatic Dissipative Laminate)

Developed specifically for surfacing workstations where static-sensitive electronic components are manufactured and assembled. ESD is postformable. Works well in hospitals, medical facilities, and clean rooms as the surface will not attract dust or dirt particles. Due to the unique composition of this product, SDL colors and their corresponding colors in standard Pionite are not exact matches. Sample evaluation is recommended.



ONE CORPORATE DRIVE, SUITE 725  
SHELTON, CT 06484 | 877.726.6526  
[WWW.PANOLAM.COM](http://WWW.PANOLAM.COM)

